



Slab Poured
Q2 2025 Delivery

For Lease

Dual Rail-Served Industrial Warehouse

Savannah Gateway Industrial Hub
Building 2G, 2010 Branch Road
Rincon, GA 31326

- ±322,844 SF warehouse + 26,666 SF covered rail platform
- 12 miles to the Port of Savannah
- Dual rail-served by CSX and Norfolk Southern via OmniTRAX with 853 linear feet of rail along building
- 32' clear height
- 51 trailer parking spaces away from building
- 187 car parking spaces
- 46 dock doors
- 2 drive-in doors
- Building dimensions: 853'-4" x 380' with 40' covered rail loading platform option
- Proximity to I-95, I-16, Highway 21, & Effingham Parkway (Construction Underway)

David Sink, SIOR

Colliers | Savannah
+1 912 662 8010
david.sink@colliers.com



Kevin Caille

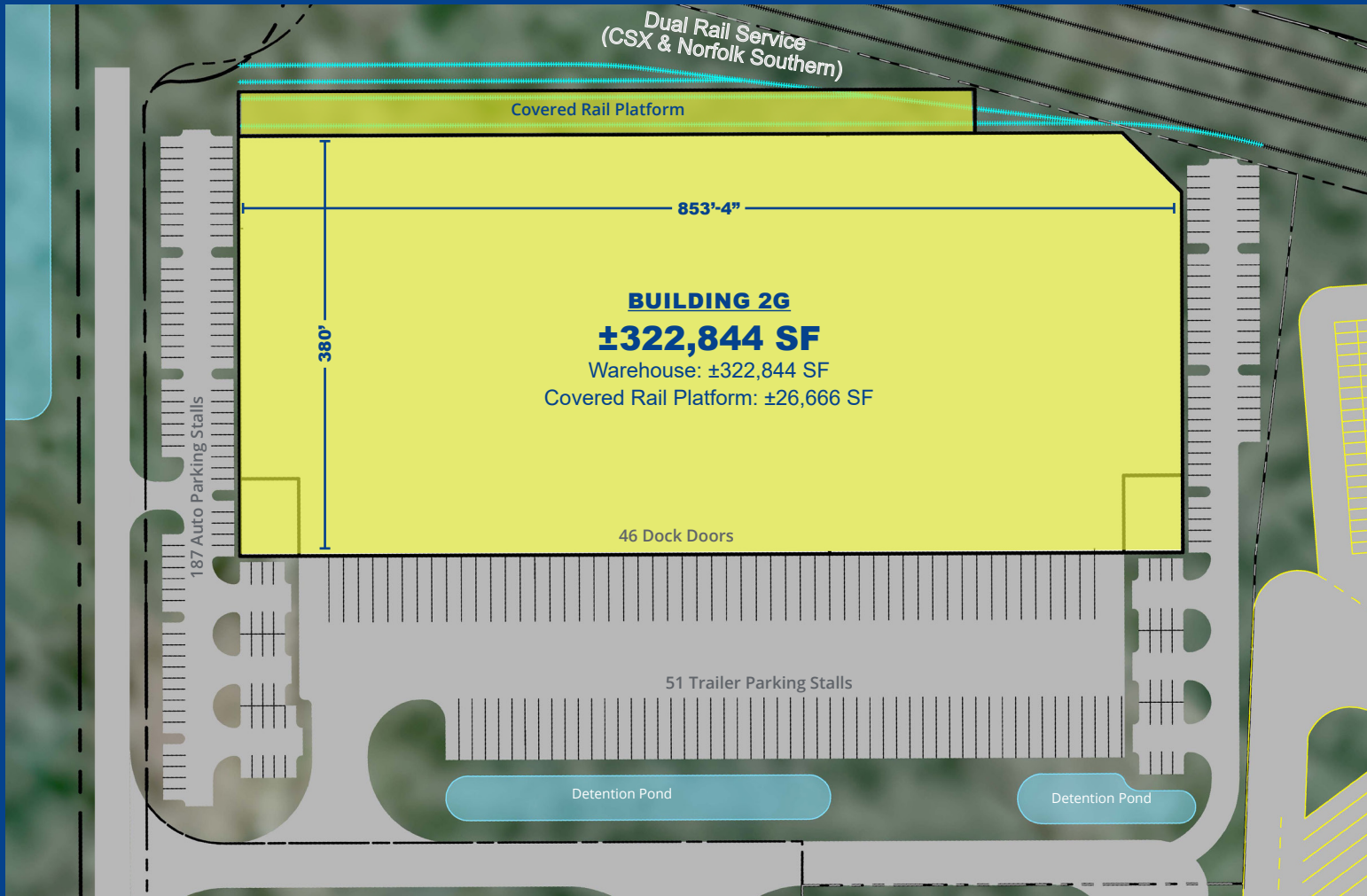
Broe Real Estate Group
+1 770 827 8385
kcaille@broerealestate.com

Scott Rogers

Broe Real Estate Group
+1 843 621 0826
srogers@broerealestate.com

Accelerating success.

Dual Rail-Served Rear Load



Building 2G Specs

322,844 sf

322,844 SF Warehouse +
26,666 SF Covered Rail Platform

46 dock

Doors

2 drive-in

Doors

32 foot

Clear Height

51 trailer

Parking Stalls

187 auto

Parking Stalls

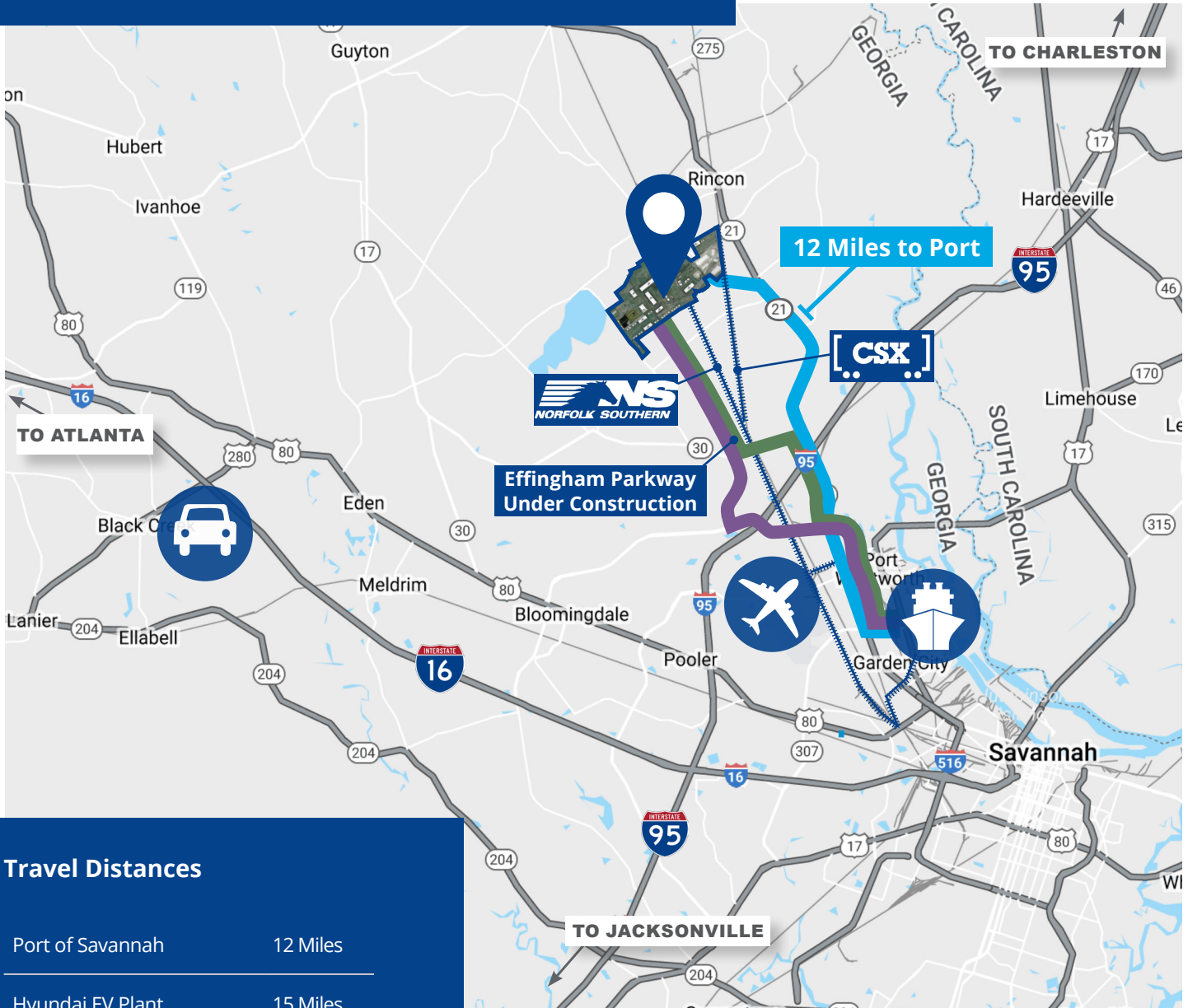
13+ rail car

Spots Along Building

Q2 2025

Delivery

Location & Access



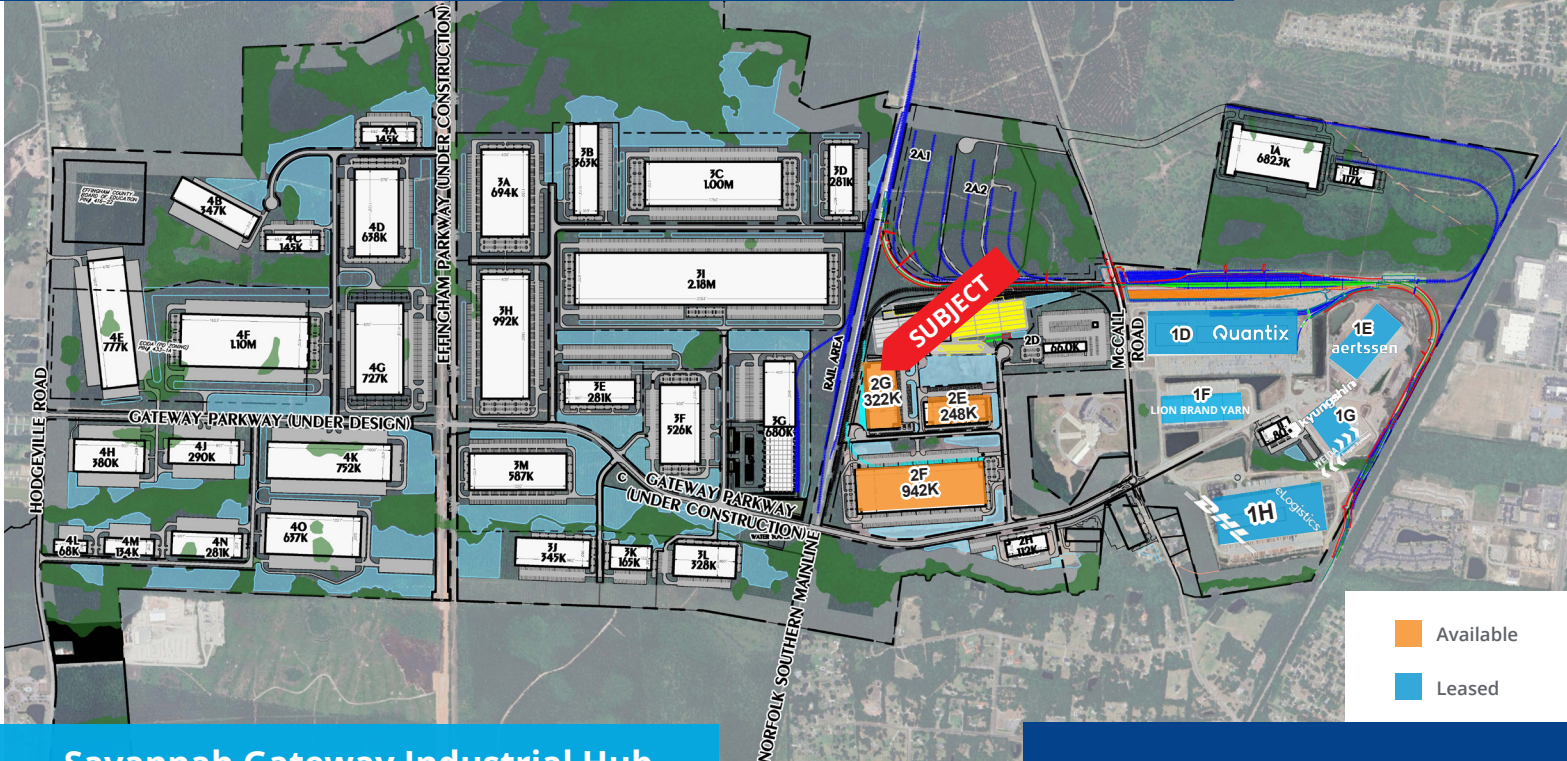
Travel Distances

Port of Savannah	12 Miles
Hyundai EV Plant	15 Miles
Interstate 95	5 Miles
Savannah Airport	9 Miles
Interstate 16	17 Miles
Atlanta, GA	238 Miles
Charlotte, NC	251 Miles
Orlando, FL	286 Miles

Legend

-  Savannah Gateway Industrial Hub
-  Georgia Ports Authority's Port of Savannah
-  Hyundai Motor Group's Electric Vehicle Plant
-  Routes to Port
-  Savannah Hilton Head International Airport
-  Interstates

Multimodal Logistics Park



Savannah Gateway Industrial Hub

- ±2,600 Acre Multimodal Industrial Logistics Park
- Direct Rail Access to CSX & Norfolk Southern via OmniTRAX
- Dedicated and Flexible Rail Switching
- 12 Miles to the Port of Savannah
- Proximity to Hyundai Electric Vehicle Plant
- Sites Available to Accommodate 75,000-2,000,000+ SF
- For Lease or Build-to-Suit
- OmniTRAX Managed Rail Services

This document has been prepared by Colliers International for advertising and general information only. Colliers International makes no guarantees, representations or warranties of any kind, expressed or implied, regarding the information including, but not limited to, warranties of content, accuracy and reliability. Any interested party should undertake their own inquiries as to the accuracy of the information. Colliers International excludes unequivocally all inferred or implied terms, conditions and warranties arising out of this document and excludes all liability for loss and damages arising there from. This publication is the copyrighted property of Colliers International and/or its licensor(s). ©2025. All rights reserved.

David Sink, SIOR
Colliers | Savannah
+1 912 662 8010
david.sink@colliers.com



Colliers | Savannah
545 E York Street
Savannah, GA 31401
P: +1 912 233 7111
F: +1 912 236 1200
colliers.com/savannah