



**Building 2F  
±942,678 SF  
Rail-Served  
Pad Complete**

**Dual Rail-Served (Option)**

**Pad Complete  
Q1 2025 Delivery**

**Aerial Date: March 2024**

**Build-to-Suit Site**

# 942,678 SF Warehouse Crossdock or Dual Rail-Served Savannah Gateway Industrial Hub Building 2F, 1014 Gateway Parkway Rincon, GA 31326

- ±942,678 SF warehouse fully designed & permitted
- 12 miles to the Port of Savannah
- 15 miles to the Hyundai Metaplant
- Option to be dual rail-served by CSX and Norfolk Southern via OmniTRAX with 1,250 linear feet of rail along building (see page 3 for option specs)
- 36' clear height
- 230 trailer parking spaces away from building
- 182 car parking spaces (expandable to 397)
- 208 dock doors
- 4 drive-in doors
- Building dimensions: 1,653'-10" x 570'
- Proximity to I-95, I-16, Highway 21, & Effingham Parkway (Construction Underway)

**David Sink, SIOR**  
Colliers | Savannah  
+1 912 662 8010  
david.sink@colliers.com

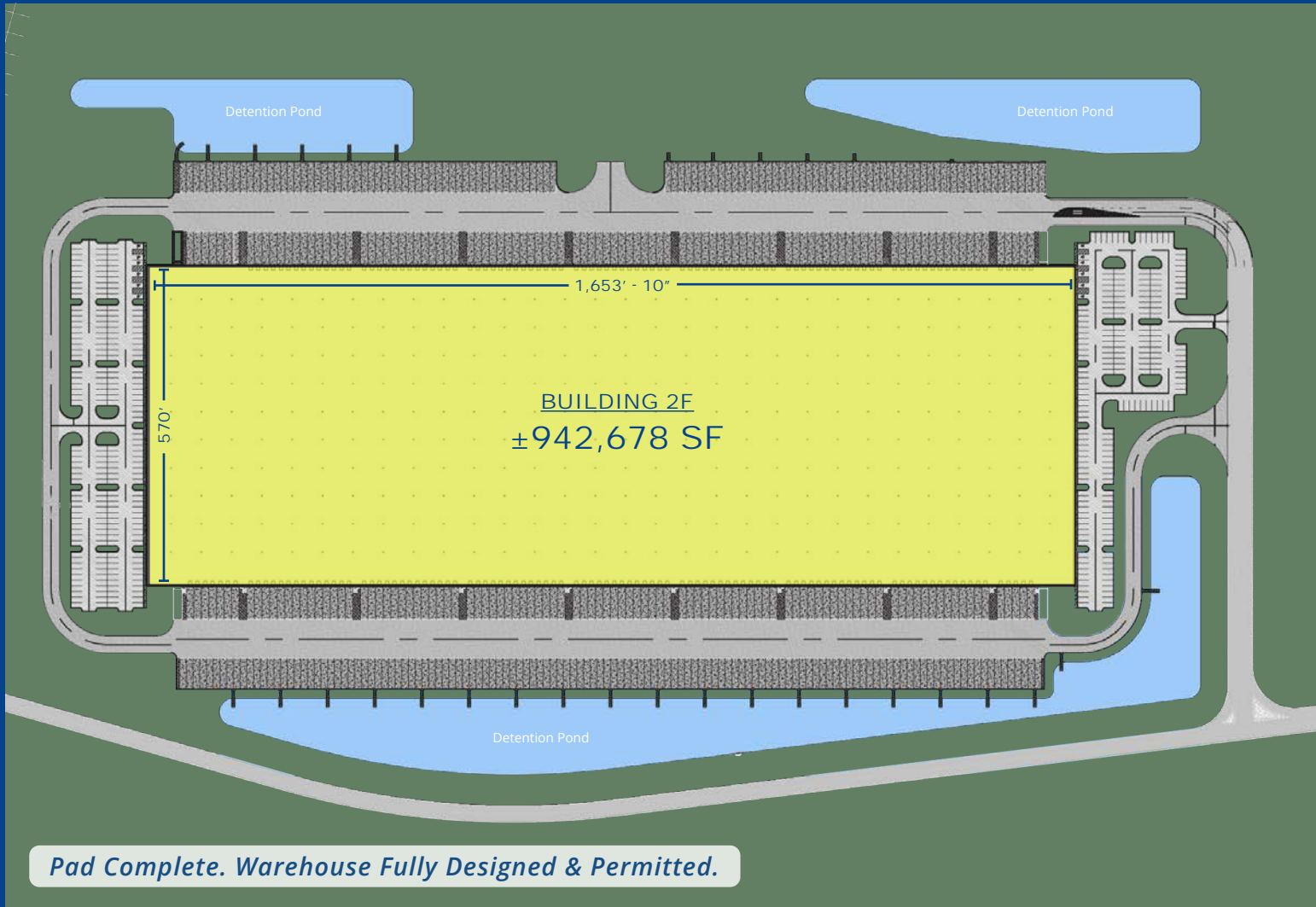


**Sean Fitzsimmons**  
Broe Real Estate Group  
+1 404 229 6725  
sfitzsimmons@broerealestate.com

**Scott Rogers**  
Broe Real Estate Group  
+1 843 621 0826  
srogers@broerealestate.com

Accelerating success.

# Crossdock



*Pad Complete. Warehouse Fully Designed & Permitted.*

## Building 2F Specs

942,678 sf  
Building Size

208 docks  
Doors

4 drive-in  
Doors

36 foot  
Clear Height

230 trailer  
Parking Stalls (Expandable)

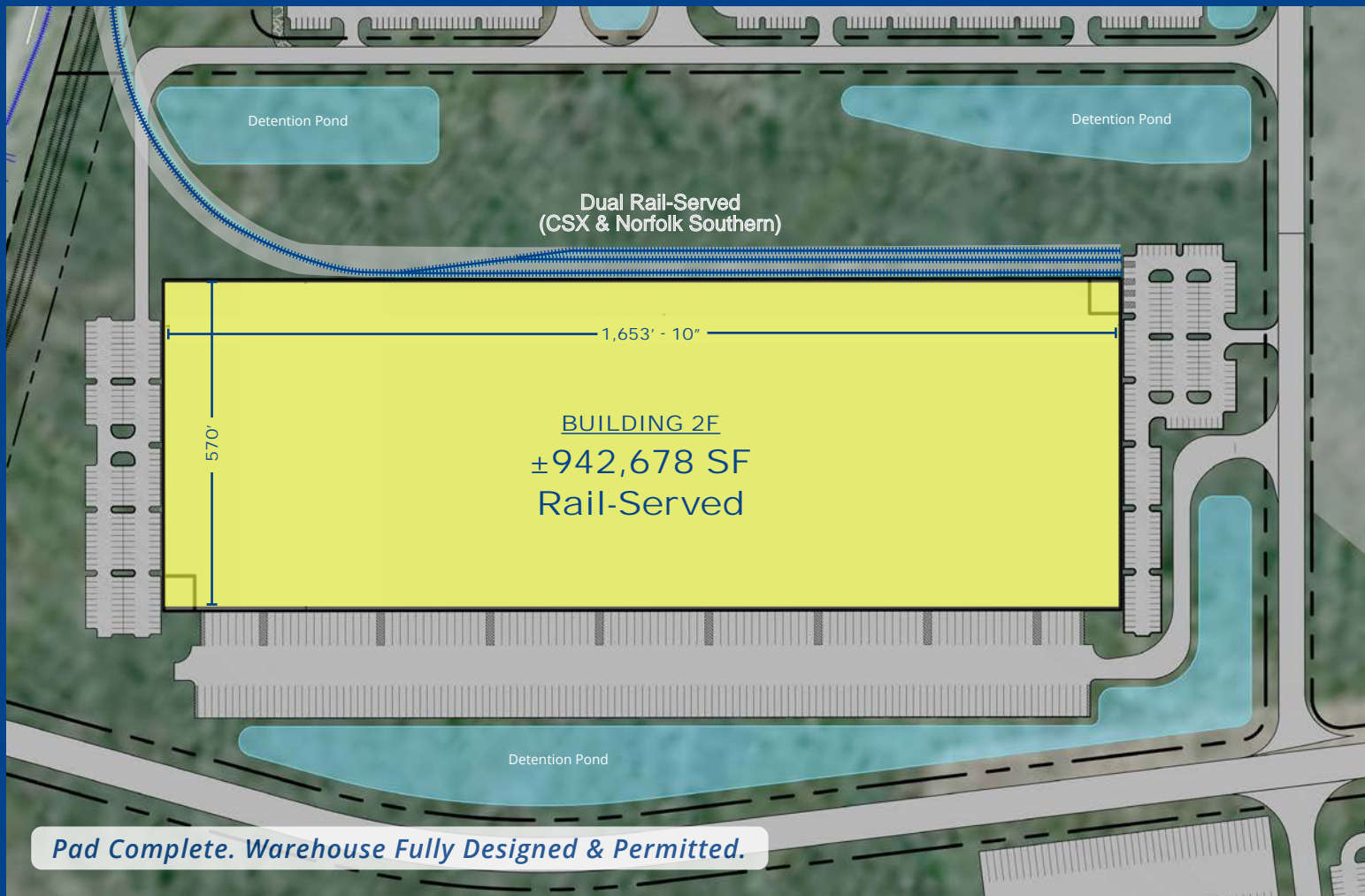
182 auto  
Parking Stalls  
(Expandable to 397)

Crossdock  
Configuration

Q1 2025  
Delivery



# Dual Rail-Served Option



## Building 2F Specs

942,678 sf

Building Size

104 docks

Doors

2 drive-in

Doors

36 foot

Clear Height

128 trailer

Parking Stalls

182 auto

Parking Stalls  
(Expandable to 397)

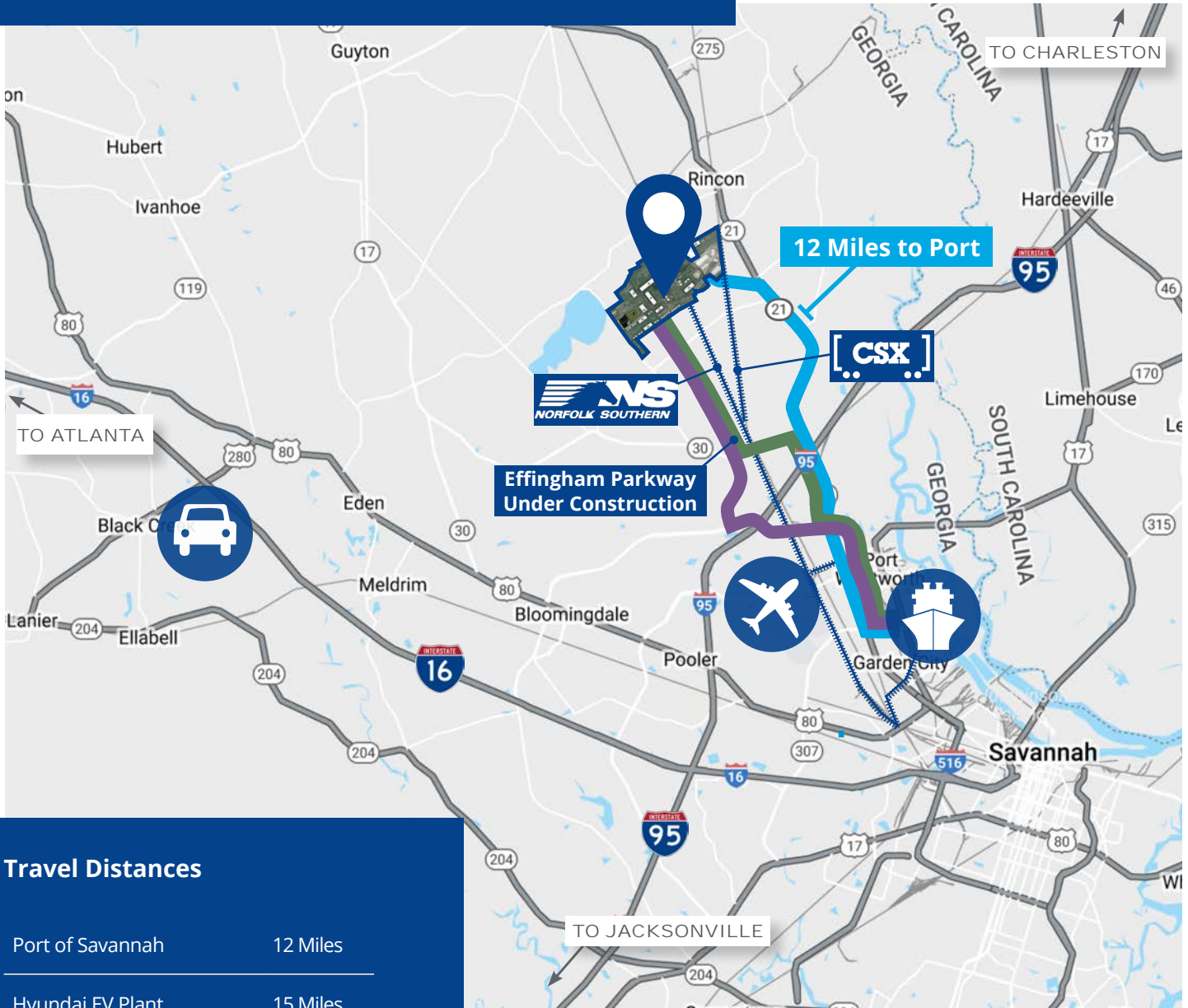
1,250 linear feet

Rail Along Building  
(Up to 80 Rail Doors)

Q1 2025

Delivery

# Location & Access



## Travel Distances

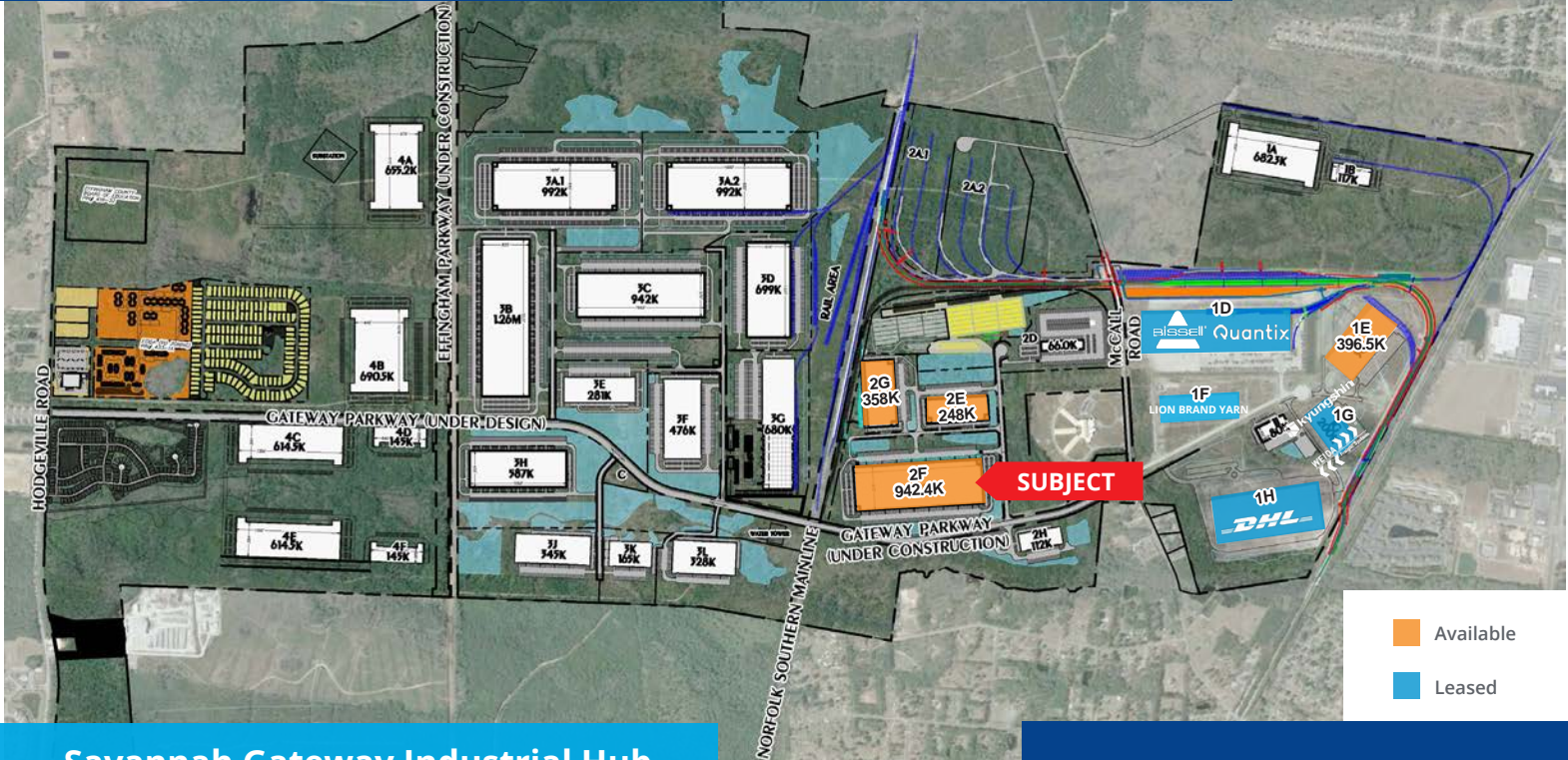
Port of Savannah	12 Miles
Hyundai EV Plant	15 Miles
Interstate 95	5 Miles
Savannah Airport	9 Miles
Interstate 16	17 Miles
Atlanta, GA	238 Miles
Charlotte, NC	251 Miles
Orlando, FL	286 Miles

## Legend

-  Savannah Gateway Industrial Hub
-  Routes to Port
-  Interstates
-  Georgia Ports Authority's Port of Savannah
-  Hyundai Motor Group's Electric Vehicle Plant
-  Savannah Hilton Head International Airport



# Multimodal Logistics Park



Available  
Leased

## Savannah Gateway Industrial Hub



±2,600 Acre Multimodal Industrial Logistics Park



Direct Rail Access to CSX & Norfolk Southern via OmniTRAX



Dedicated and Flexible Rail Switching



12 Miles to the Port of Savannah



Proximity to Hyundai Electric Vehicle Plant



Sites Available to Accommodate 75,000-2,000,000+ SF



Available for Build-to-Suit



OmniTRAX Managed Rail Services

This document has been prepared by Colliers International for advertising and general information only. Colliers International makes no guarantees, representations or warranties of any kind, expressed or implied, regarding the information including, but not limited to, warranties of content, accuracy and reliability. Any interested party should undertake their own inquiries as to the accuracy of the information. Colliers International excludes unequivocally all inferred or implied terms, conditions and warranties arising out of this document and excludes all liability for loss and damages arising there from. This publication is the copyrighted property of Colliers International and/or its licensor(s). ©2024. All rights reserved.

**David Sink, SIOR**

Colliers | Savannah  
+1 912 662 8010  
david.sink@colliers.com



**Colliers | Savannah**

545 E York Street  
Savannah, GA 31401  
P: +1 912 233 7111  
F: +1 912 236 1200  
colliers.com/savannah